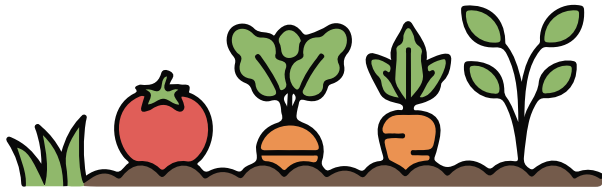


THANK YOU!

Thank you to everyone who shared God's blessings and contributed to help us meet our \$150,000 Matching Gift Challenge. We are so thankful for your generous response as we continue to minister to the hurting and the homeless in our community.

If you missed the opportunity, there's another chance to have your donation to the Mission **matched** as a part of *PA/Ohio Gives Giving Week* June 20 - June 26
Visit: paohgives.org for more information.



Plant A Row For The Mission!

Is Your Garden Overflowing?

Help feed hungry and homeless people this summer by planting a row of fresh vegetables in your garden and donating the bounty to the Mission!

CARING MINISTRIES OF THE MISSION

Men's Ministry

Emergency shelter and care to homeless men seeking to gain housing and employment; Christ-centered life/addiction recovery and discipleship.

Women's Ministry

Emergency shelter for homeless women and women with children where they can heal, pray and plan; Christ-centered life/addiction recovery and discipleship.

Food Services

Serves one meal 365 days a year and is open to anyone in the community; Family Care Ministry provides food and hygiene items to families in need.

Youth Ministry

Ministry and mentoring events and activities to children and youth in our community.



City Rescue Mission

Physical Address: 319 S Croton Ave.

New Castle, PA 16101

Mailing Address: P.O. Box 965

New Castle, PA 16103-0965

724-652-4321

cityrescuemission.org



A copy of the official registration and financial information of the City Rescue Mission of New Castle may be obtained from the Pennsylvania Department of State by calling toll free within PA, 1-800-732-0999. Registration does not imply endorsement.

JUNE 2026

the Ideas Publication



City Rescue Mission

Since 1911

Feeding the Hungry
Sheltering the Homeless
Offering Hope
Since 1911

cityrescuemission.org

Practical Ways You Can Help

Thank You for Helping Your Neighbors in Need
by Donating These Items!

VOLUNTEER OPPORTUNITIES

Family Care Ministry Needs

Pork & Beans, Ketchup, Salad Dressings, Canned Meat (*Chicken, Pork, Beef*), Soup, Boxed Mashed Potatoes, Mac & Cheese, Rice, Pasta/Noodles (*any kind*), Pasta Sauce, Canned Beans (*kidney and black*), Canned Fruit, Cereal, Bottled Water

Men's Ministry Needs

Jeans (*waist 32-40*), Underwear/Boxer Briefs (*New/Unopened Size M/L*), T-Shirts, Pocket Tissues, Air Freshener Spray, Shower Shoes/Flip-Flops, Belts, Deodorant, Sweatshirts, New/Slightly Used Shoes, Towels & Washcloths, \$5 Gift Cards for Men's Recovery Program (*Dunkin, Burger King, etc.*)

Women's Ministry Needs

Sunscreen, Women's Pajamas (*all sizes*), House Dresses, Disposable Incontinence Products, Washcloths, Bath Towels, New Women's Underwear (*New/Unopened/Small*), Bras, Facial Tissues, Kitchen & Bathroom Cleaner, Batteries (AA/AAA/9V), Various Storage Bags (*freezer, sandwich, quart, gallon*), Hair Brushes, Journals, Adult Coloring Books, Deodorant, \$5 Gift Cards for Women's Recovery Program (*Dunkin, Burger King, etc.*)

Share the Message!

Our resources page has graphic and video downloads you can use at your church to help promote the Mission!



SCAN ME

A Legacy That Lasts

Request our special bulletin to learn how.

**"One Man's "Trash"
Turns Out to Be
Treasure!"**

Email: legacy@cityrescuemission.org
or call 724-652-4321

Host a Party or Activity

Game night or picnic for guests or an arts & crafts class.

Donor Ambassadors needed to make appreciation telephone calls to donors from your home.
(No Soliciting)

Men and Women of Faith needed to teach and/or facilitate a Bible study or devotions.

Groups Needed to Bring a Meal (BAM!)

Churches or groups needed to bring food, prepare it and serve it to Mission guests.

Church Ambassadors needed to help educate, inform and connect your church to the work of the Mission.

Interested in Helping?

Complete an inquiry form at cityrescuemission.org/volunteer or email your contact information to volunteer@cityrescuemission.org

SCAN THE QR
CODE TO VISIT
OUR
VOLUNTEER
PAGE



SCAN ME